

SizeWorks Baby Blocks



Size designs the easy way with SizeWorks from Designer's Gallery. No design is too large or too small with this program. This free project will create a small, medium and large design while using only one design for each side. The designs were taken from the Amazing Design Children's Appliqué collection.

By: Diane Kron, Software and Embroidery Projects Manager for Designer's Gallery

Your Email Could Use A Little Embroider-E

Subscribe to the only embroider e-news devoted to embroidery software today :>



Designer's Gallery
Lets Embroidery Designs Work For You

Supplies:

Embroidery machine

SizeWorks from Designer's Gallery Stand-alone version

Children's Appliqué collection from Amazing Designs (ADC-78)

½ Yard each of 2 solid colored fabrics for embroidery

Assortment of print fabrics for appliqué

Baby Lock Tear-Away stabilizer

Polyester Fiber Fill

Temporary spray adhesive

Embroidery and bobbin thread


General sewing and embroidery supplies

Instructions:

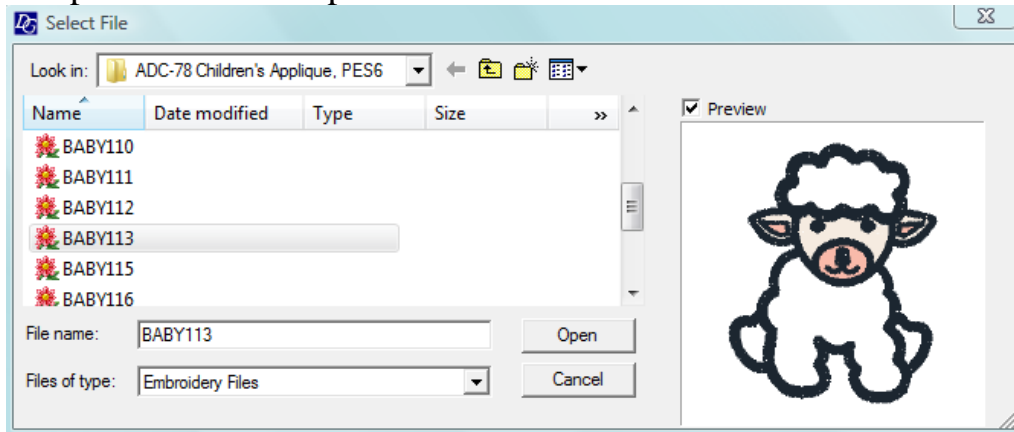
In this written project, the lamb design will be referred to when resizing. Repeat these steps to create three additional sized designs for the other sides of the baby blocks.

At the Computer:

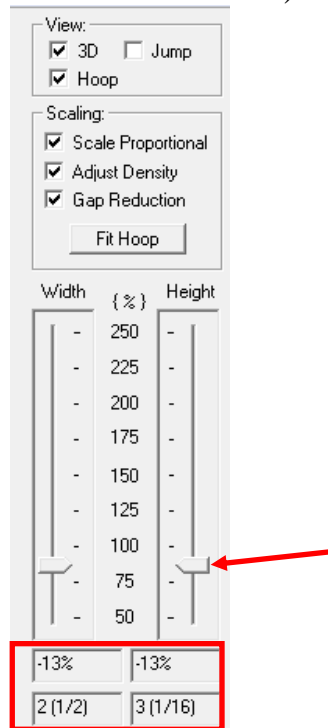
Small Lamb Design:

1. Open the program by clicking on the SizeWorks icon on the desktop.
Option: if you do not have the stand-alone version, you can open the program in CustomWorks II, Designer's Gallery Studio Plus, or Studio III.
2. Follow the next set of directions to resize the design smaller:
 - Click on the Open Folder  icon on the top toolbar.

- Retrieve design number baby113 from the saved location on your computer and click Open.



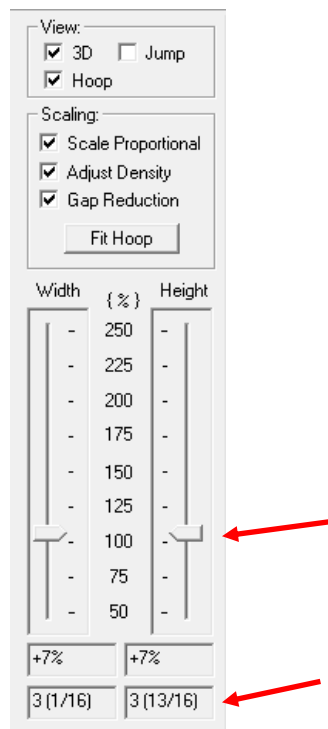
3. Using the default settings (As shown in the following illustration) slide the Height scroll bar downward until the size of the design measures 2 1/2" x 3 1/16". (The size of the design is shown in the illustration below, within the red box.)



4. To save the design, click on the save icon on the top toolbar and save as a .pes file to the media device that your embroidery machine will read. Rename the design to Small Lamb.

Medium Sized Lamb Design:

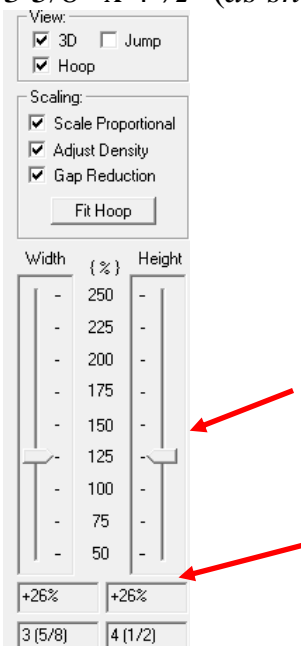
1. Using the same lamb design that is on the workspace, resize the lamb larger by sliding the scroll bar upward so that the design measures 3 1/16" x 3 13/16" (as shown in the following illustration).



2. To save the design, click on the save icon on the top toolbar and save as a .pes file to the media device that your embroidery machine will read. Rename the design to Medium Lamb.

Large Sized Lamb Design:

1. Using the same lamb design that is on the workspace, resize the lamb larger by sliding the scroll bar upward so that the design measures 3 5/8" x 4 1/2" (as shown in the following illustration).



2. To save the design, click on the save icon on the top toolbar and save as a .pes file to the media device that your embroidery machine will read. Rename the design to Large Lamb.

At the Cutting Table:

Small block – 4" square

Medium block – 5" square

Large block 6" square

1. To cut the three different sizes for the blocks, follow the next set of steps:
 - From the two solid fabrics, cut 2 pink squares and 2 cream colored squares for each of the blocks that measure four, five and six inches square. The seam allowance is included.
 - From the print fabric, cut two squares for each block size.

At the Embroidery Machine:

1. Hoop the Tear-Away stabilizer in the hoop (200mm x 200mm) and spray with the temporary spray adhesive.
2. Place one of the solid colored fabrics in the hoop, being careful to center the square in the hoop. Use the Positioning Sticker for perfect placement in the hoop.
3. With the machine on and the Small Lamb design on the machine's workspace, select the Position icon to center the design in the hoop. Embroider the design following the appliqué directions for the design while using the print fabrics of your choice for the appliqué areas. Use thread colors that coordinate with your fabric choices. Be sure to embroider the small design on the 4" squares, the medium design on the 5" squares and the large design on the 6" squares.
4. Repeat Steps 1-3 for all of the designs on all of the solid squares for all of the block sizes. Press each of the squares.

Assembly:

1. Following the diagram below and using a ¼" seam allowance while starting and stopping a ¼" from each end, sew square E to B.
2. Sew F to B.
3. Sew A to B.
4. Sew C to B.
5. Sew D to C.
6. Sew E to A.
7. Sew A to F.
8. Sew E to C.
9. Sew F to C.
10. Sew D to A.
11. For the last seam, leave a 2" opening for turning and to add the fiber fill.
12. Turn the block right sides out.
13. Push out the corners.
14. Stuff the block with the polyester fiber fill.

15. Slip stitch the seam closed.

